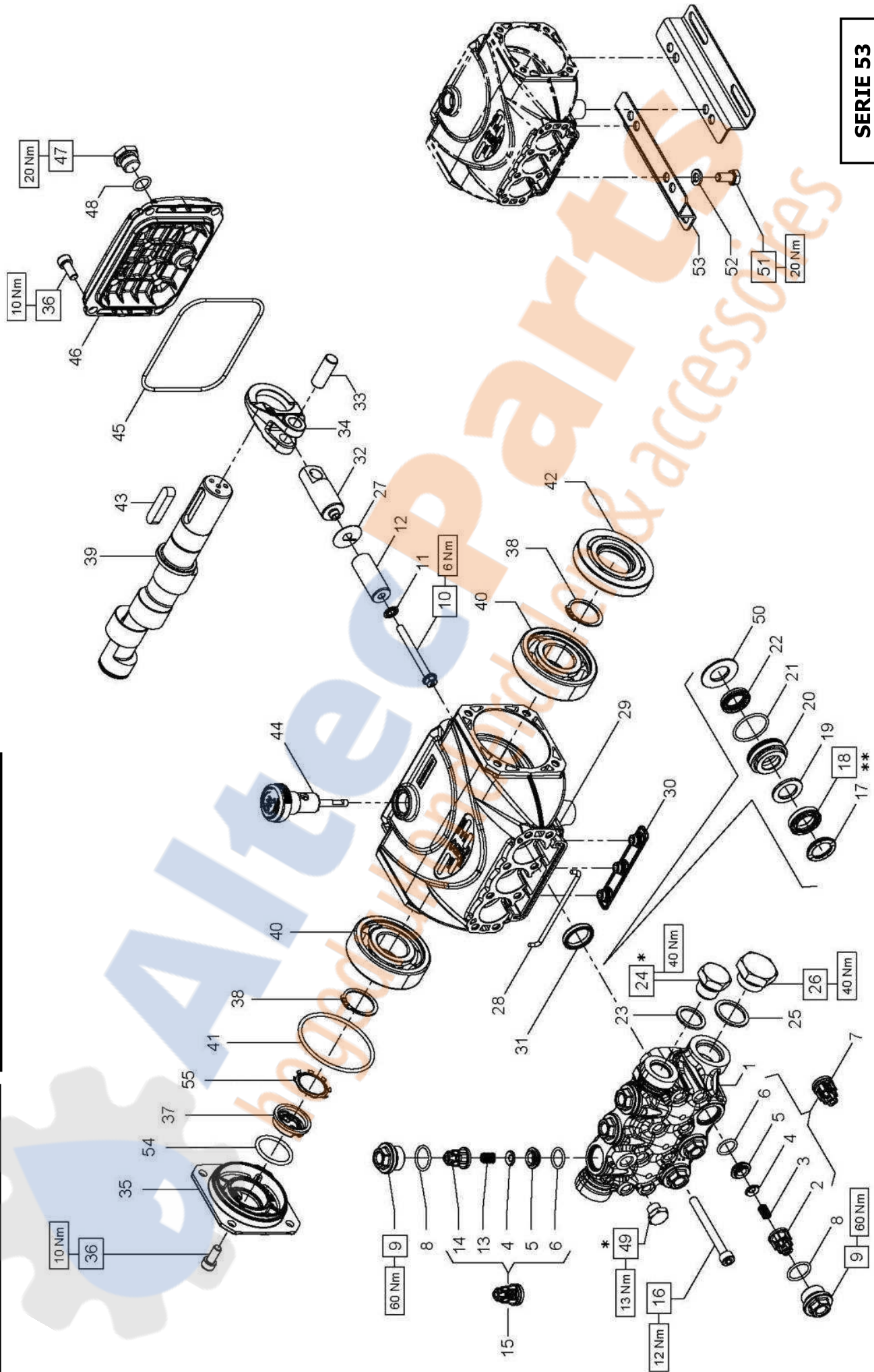


\*\* Lubrificare con grasso di vaselina  
 \*\* To lubricate with vaseline grease  
 \*\* Lubrifier avec gras des vaseline  
 \*\* Sich mit fett zum vaselin schmieren  
 \*\* Para lubricar con la grasa de vaselina  
 \*\* Para lubrificar com a graxa de vaselina

\* Fissare con Loctite 542 col. ROSSO  
 \* Affix with Loctite 542 col. RED  
 \* Fixer avec de la Loctite 542 couleur ROUGE  
 \* Mit Loctite 542 ROT befestigen  
 \* Fijar con Loctite 542 col. ROJO  
 \* Fixar com Loctite 542 cor. VERMELHA



**E1B1807 - E1B1808 - E1B1809 - E1B1611 - E1B1612**  
**E1B1613 - E1B1614 - E1B1810 - E1C1808 - E1C1609**  
**E1C1810 - E1C1811 - E1C1612 - E1C1613 - E1C1614**  
**E1D1807 - E1D1808 - E1D1810 - E1D1811 - E1D1813**  
**E1D1814 - E1E1808 - E1E1810 - E1E1812 - E1E1813**  
**E1E3106 - E1E3107 - E1E3108 - E1E3109 - E1E3110**  
**E1E3111 - E1E3112 - E1E3113 - E1E1814 - E1B1610**

PISTON D. 13		PISTON D. 15		PISTON D. 18	
E1E3106 - E1E3107	E1B1807 - E1B1808 - E1B1809	E1B1611 - E1B1612	E1B1810 - E1C1808 - E1C1810	E1B1611 - E1B1612	E1B1610
E1E3108 - E1E3109	E1C1811 - E1D1807 - E1D1808	E1B1614 - E1C1609	E1D1810 - E1D1811 - E1D1813	E1C1612 - E1C1613	
E1E3110 - E1E3111	E1D1814 - E1E1808 - E1E1810	E1C1614 - E1B1613	E1E1812 - E1E1813 - E1E1814		
E1E3112 - E1E3113					

POS	COD.	DESCRIZIONE - DESCRIPTION - KIT	NR
1	53.1206.15	Testata pompa D. 13	1
	53.1200.15	Testata pompa D. 15	
	53.1201.15	Testata pompa D. 18	
2	36.2119.51	Guida valvola d'aspirazione	309
3	94.7326.00	Molla Dm. 6.0x12.0	309
4	36.2112.76	Valvola sferica	309
5	36.2113.66	Sede valvola	309
6	90.3674.00	OR D. 12.00x2.00 NBR SH. 70	309
7	36.7224.01	Gr. valvola d'aspirazione	309
8	90.3593.00	OR D. 15.60x1.78 NBR SH. 70 2062	310-333
9	98.2137.50	Tappo M18x1.5x10 - D.15-18	310
	98.2137.40	Tappo M18x1.5x10 - D.13	333
10	99.1690.00	Vite M5x55	3
11	96.6905.00	Rosetta D. 5.0x11.5x0.4	3
12	63.0406.09	Pistone D. 13x38.5	3
	53.0400.09	Pistone D. 15x38.5	
	63.0405.09	Pistone D. 18x38.5	
13	94.7333.00	Molla Dm. 6.2x10.4	309
14	36.2111.51	Guida valvola di mandata	309
15	36.7193.01	Gr. valvola di mandata	309
16	99.1990.00	Vite M6x60 UNI 5931	8
17	44.1002.51	Anello di testa D. 13	318-319
	63.1010.51	Anello di testa D. 15	312-313
	63.1011.51	Anello di testa D. 18	314-315

**KIT RICAMBI - SPARE KITS**

KIT Nr.	PISTONE - PISTON D. 13			PISTONE - PISTON D. 15			PISTONE - PISTON D. 18				
	KIT 309	KIT 311	KIT 333	KIT 318	KIT 319	KIT 310	KIT 312	KIT 313	KIT 310	KIT 314	KIT 315
Posizioni include Positions included	2 - 3 - 4 5 - 6 - 13 14 (7) - (15)	31	8 - 9	17 - 18 19 - 21 22	17 - 18 19 - 20 21 - 22 50	8 - 9	17 - 18 19 - 21 22	17 - 18 19 - 20 21 - 22 50	8 - 9	17 - 18 19 - 21 22	17 - 18 19 - 20 21 - 22 50
Nr. Pcs.	3 ÷ 6	3	6	3	1	6	3	1	6	3	1

POS	COD.	DESCRIZIONE - DESCRIPTION - KIT	NR	POS	COD.	DESCRIZIONE - DESCRIPTION - KIT	NR
18	90.2602.00	An. ten.alt. D.13x21x4 HP	318-319	39	60.0202.65	Alb. ecc. C.5 - E1D1807 E1E1808 E1E3106	1
	90.2611.00	An. ten.alt. D.15x24x5.4/3.4 HP	312-313		60.0204.65	Alb. ecc. C.6 - E1D1808 E1E1810 E1E3107	
	90.2653.50	An. ten.alt. D.18x28x6/3.7 HP	314-315		60.0207.65	Alb. ecc. C.7.2 - E1C1609 E1D1810 E1E1812 E1E3108	
19	90.5076.50	Anello antiest. D. 13x21x3	318-319		60.0209.65	Alb. ecc. C.8 - E1E1813 E1E3109 E1D1811 E1E1814	
	90.5089.90	Anello antiest. D. 15x24x2	312-313		60.0285.35	Alb. ecc. C.9 - E1D1813 E1E3110	
	90.5111.50	Anello antiest. D. 18x28x2	314-315		60.0212.35	Alb. ecc. C.9.4 - E1B1807 E1C1808 E1C1612 E1B1610	
20	53.2104.70	Supporto guarnizione D. 13	319		60.0217.35	Alb. ecc. C.11.5 - E1B1808 E1C1810 E1E3113 E1B1613	
	53.2101.70	Supporto guarnizione D. 15	313		60.0283.35	Alb. ecc. C.10 - E1B1611 E1C1613 E1D1814 E1E3111	
	53.2102.70	Supporto guarnizione D. 18	315		60.0284.35	Alb. ecc. C.11 - E1B1612 E1C1614 E1E3112	
21	90.3604.00	OR D. 25.12x1.78 NBR SH. 70 2100	312-313-314-315-318-319		53.0200.35	Alb. ecc. C.13 - E1B1614 E1B1810	
					53.0201.35	Alb. ecc. C.12 - E1B1809 E1C1811	
22	90.2601.00	An. ten. alt. D. 13x20x5 LP	318-319	40	91.8328.00	Cuscinetto a sfere - D. 15-18	2
	90.2608.00	An. ten. alt. D. 15x22x5 LP	312-313		91.8331.00	Cuscinetto a sfere - D. 13	
	90.2650.00	An. ten. alt. D. 18x24x5 LP	314-315				
23	96.7380.00	Rosetta D. 17.5x23.0x1.5	1	41	90.3898.00	OR D. 56.82x2.62 NBR SH. 70 3225	1
24	98.2100.50	Tappo G 3/8"x13 TE22 - Zinc.	1	42	90.1641.00	Anello rad. D. 25.0x62.0x10.0	1
25	96.7514.00	Rosetta D. 21.5x27.0x1.5	1	43	91.4892.00	Linguetta 8x7x35	1
26	98.2187.00	Tappo G 1/2"x10 TE27 - Zinc.	1	44	98.2108.00	Tappo con asta G 3/8"x45	1
27	96.6990.00	Rosetta D. 7.5x23.0x0.5	3	45	90.3917.00	OR D. 88.57x2.62 NBR SH. 70 3350	1
28	53.2103.82	Guarnizione spugna D. 3x85	1	46	53.1600.22	Coperchio posteriore	1
29	53.0100.22	Carter pompa	1	47	98.2042.50	Tappo G 1/4"x9 TE17 - Zinc.	1
30	58.2104.51	Protezione	1	48	90.3585.00	OR D. 10.82.1.78 NBR SH. 70 2043	1
31	90.1593.00	Anello rad. D. 18.0x24.0x4.0	311	49	98.1968.00	Tappo G 1/8"x8	1
32	53.0500.66	Guida pistone	3		53.2105.70	Anello per tenuta D. 13	319
	97.7338.00	Spinotto D. 10x26.5	3		53.2106.70	Anello per tenuta D. 15	313
					53.2107.70	Anello per tenuta D. 18	315
34	53.0300.22	Biella	3	51	99.3037.00	Vite M8x16 UNI 5739	4
35	53.1500.22	Coperchio laterale carter	1	52	96.7016.00	Rosetta D. 8.4x14.4x2.0	4
36	99.1837.00	Vite M6x14 UNI 5931	8	53	50.2000.74	Piedino pompa	2
37	53.2108.51	Vetrino spia livello olio	1	54	90.3859.00	OR D. 25.07x2.62 NBR SH. 70 3100	1
38	90.0635.00	Anello d'arresto A25	2	55	90.0671.00	Anello d'arresto ZJ30	1